

Airport information:

Country: Netherlands Antilles

City: ST. MAARTEN

Coordinates: N 18° 02.5', W 063° 06.5'

Elevation: 14

Customs: Customs

Fuel: 100, Jet A1

RFF: CAT 8

hours: 1100-0100 + O/R 24 HR.

Runways:

Runway 10

Takeoff length: 2300, Landing length: 2270

Runway 28

Takeoff length: 2270, Landing length: 2270

AERODROME

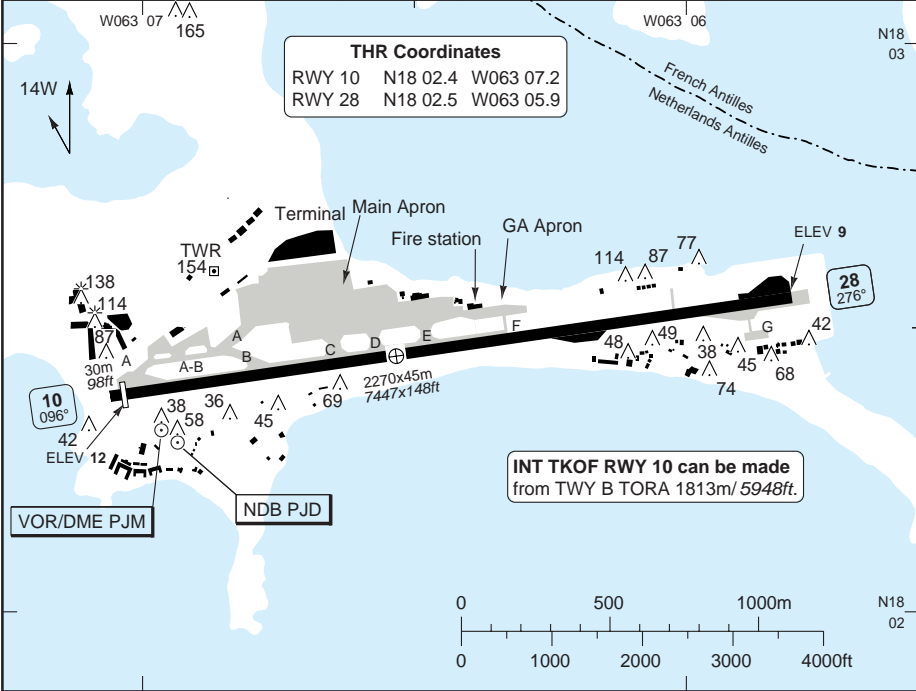
1 ST. MAARTEN/PHILIPSBURG

10 - 1

Juliana TWR
118.7

1 Princess Juliana INTL

AD Elev 14 | ARP: N18 02.5 W063 06.6 | RFF: CAT 9 | AD HR: 11-01, OT 24HR PNR



RWY	Slope	TORA m/ft	LDA m/ft	ALS	REDL	Additional
10	0	2300 / 7546	2270 / 7447	-	H	P 3° L/R (56), REIL
28	0	2270 / 7447	2270 / 7447	-	H	REIL

STATE TAKE OFF MINIMA

RWY	Facilities	CEIL/VIS			
		A	B	C	D
10	RCL (day only) or RCL + REDL	1200 ft / 2.8 km			
28	Landing RWY 28 at night prohibited, VMC by day.	-			

© Navtech - tncm01laorg0

Change: New spec.

THIS CHART IS A PART OF NAVIGRAPH NDAC AND IS INTENDED FOR FLIGHT SIMULATION USE ONLY

AERODROME

1 ST. MAARTEN/PHILIPSBURG

10 - 2

Juliana TWR
118.7

1 Princess Juliana INTL

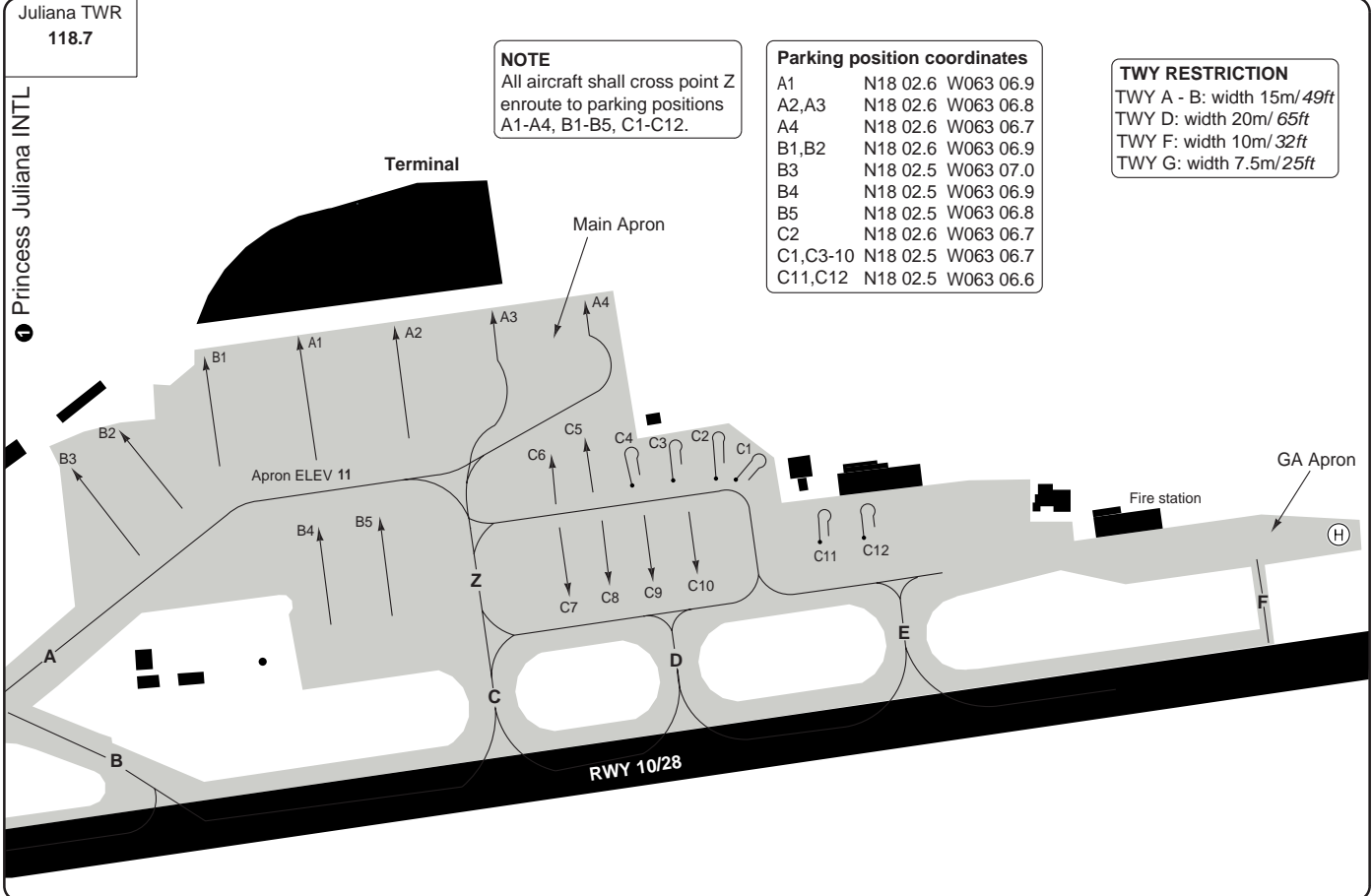
NOTE
All aircraft shall cross point Z enroute to parking positions A1-A4, B1-B5, C1-C12.

Parking position coordinates

A1	N18 02.6	W063 06.9
A2,A3	N18 02.6	W063 06.8
A4	N18 02.6	W063 06.7
B1,B2	N18 02.6	W063 06.9
B3	N18 02.5	W063 07.0
B4	N18 02.5	W063 06.9
B5	N18 02.5	W063 06.8
C2	N18 02.6	W063 06.7
C1,C3-10	N18 02.5	W063 06.7
C11,C12	N18 02.5	W063 06.6

TWY RESTRICTION

TWY A - B:	width 15m/ 49ft
TWY D:	width 20m/ 65ft
TWY F:	width 10m/ 32ft
TWY G:	width 7.5m/ 25ft



GENERAL Princess Juliana INTL ST. MAARTEN/PHILIPSBURG

GENERAL INFORMATION

1. AERODROME RESTRICTION

24hr PN required for non-scheduled flight.

2. NIGHT FLIGHT RESTRICTION

Landing RWY 28 at night prohibited.

3. CIRCUITS

Right hand circuit RWY 10 (Left hand turn after TKOF avbl on request by day in VMC to

ACFT with maximum TKOF mass of 7000kg or less, excluding jet ACFT).

Left hand circuit RWY 28 (Right hand turn after TKOF avbl on request only).

4. TAKE-OFF

RWY 10 mandatory right turn, hazard beacons on hills to the east must be visible.

5. TRAFFIC NOTES

Overflying of built up areas below 2000ft and beaches below 500ft prohibited.

6. RWY RESTRICTION

Jet ACFT landing RWY 10 shall make a right turn at first turning pad, or left 180° turn at end of RWY.

7. CLOSE-IN OBSTACLES

RWY 10

602ft hazard beacon 1898m/6227ft from DER, 183m/602ft left of centreline.

1118ft hazard beacon 2811m/9224ft from DER, 623m/2044ft right of centreline.

10 - 3

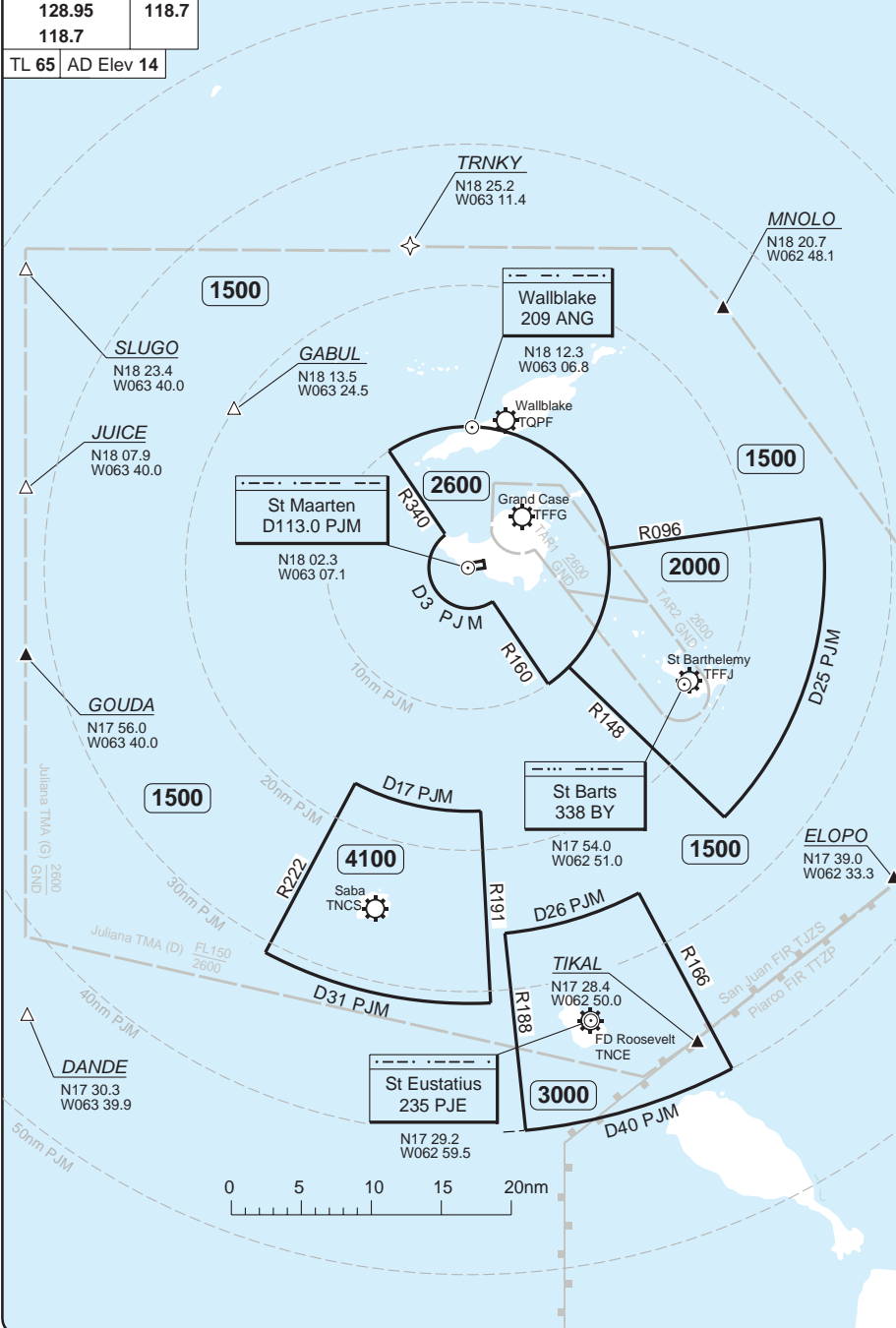
RADAR Minimum Altitudes

1 ST. MAARTEN/PHILIPSBURG

Juliana APP	TWR
128.95	118.7
118.7	

TL 65 AD Elev 14

1 Princess Juliana INTL



20 - 1

© Navtech - tncm01vaorg0

Reverse side blank

Change: New spec.

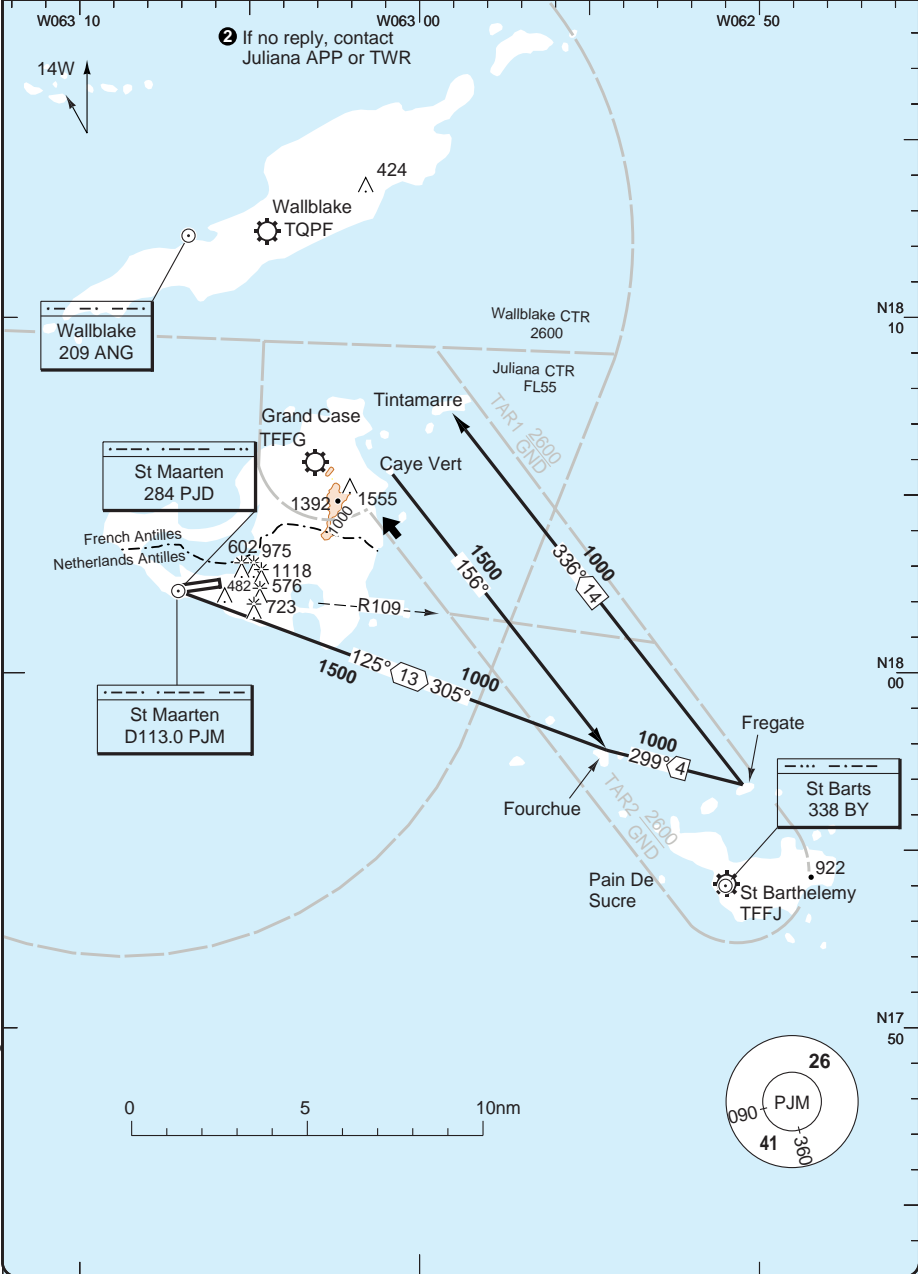
THIS CHART IS A PART OF NAVIGRAPH NDAC AND IS INTENDED FOR FLIGHT SIMULATION USE ONLY

VISUAL EAST

1 ST. MAARTEN/PHILIPSBURG

Juliana APP 128.95 118.7	TWR 118.7	Grand Case AFIS 119.2 2	St. Barts AFIS 118.45 2	1 Princess Juliana INTL
--------------------------------	--------------	----------------------------	----------------------------	-------------------------

AD Elev 14	TL 65	TA 5000
------------	-------	---------



4-1

Reverse side blank

© Navitech - tncm01uaorg0

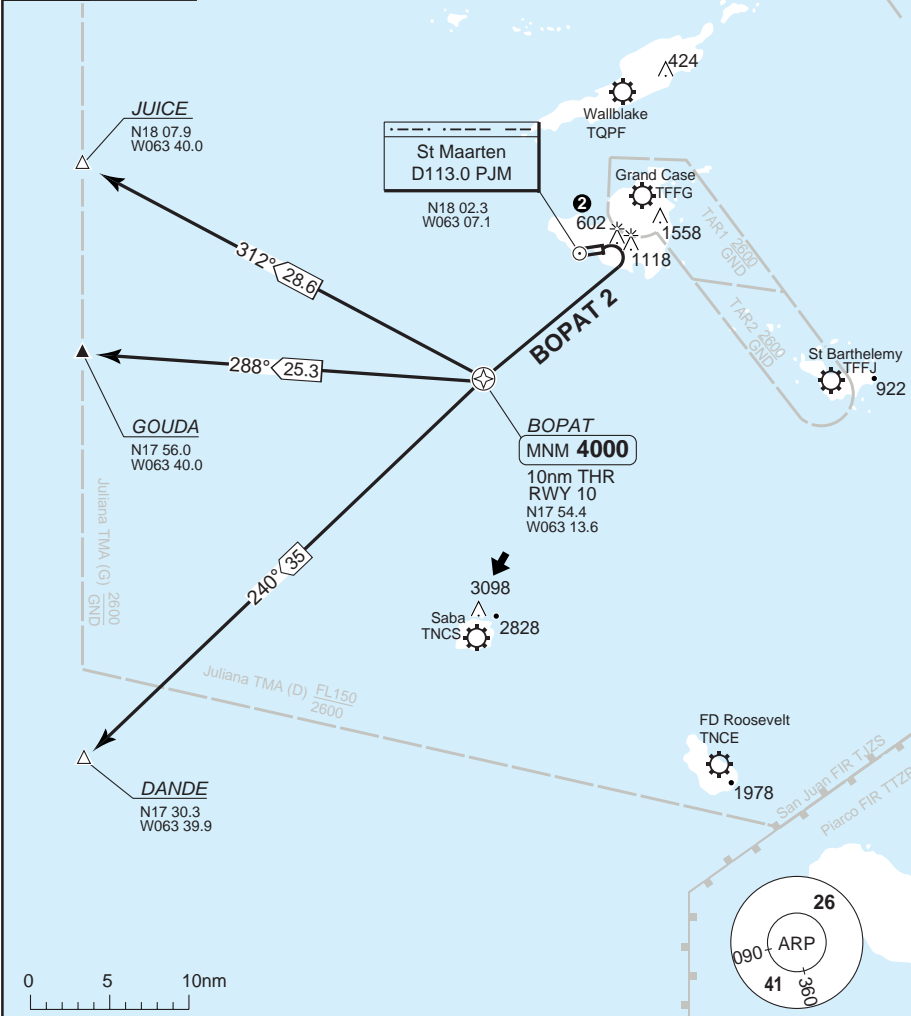
Change: New spec.

THIS CHART IS A PART OF NAVIGRAPH NDAC AND IS INTENDED FOR FLIGHT SIMULATION USE ONLY

SID RWY 10 **RNAV** GNSS BOPAT 2 **1** ST. MAARTEN/PHILIPSBURG

Juliana TWR 118.7	APP 128.95 118.7
TA 5000	AD Elev 14

1 Princess Juliana INTL
 May be superseded by radar vectors



NOTE: MNM 1200 ceiling and VIS 2.8nm required to see and avoid the mountain 2.8nm east DER.
2 602ft hazard beacon, 6227ft from DER, 2044ft right of RCL. 1118ft hazard beacon, 9224ft from DER, 2044ft right of RCL.

MNM CLIMB GRADIENT: Determined by the visual track flown, operators will manoeuvre visually over lower terrain to minimise the necessary climb gradient.

SID	Routeing	Altitudes
BOPAT 2	After TKOF turn right to BOPAT - 240° - DANDE.	BOPAT MNM 4000 (If unable advise ATC)
	After TKOF turn right to BOPAT - 288° - GOUDA.	
	After TKOF turn right to BOPAT - 312° - JUICE.	

Change: New spec.

© Navitech - tnrcm01daorg0

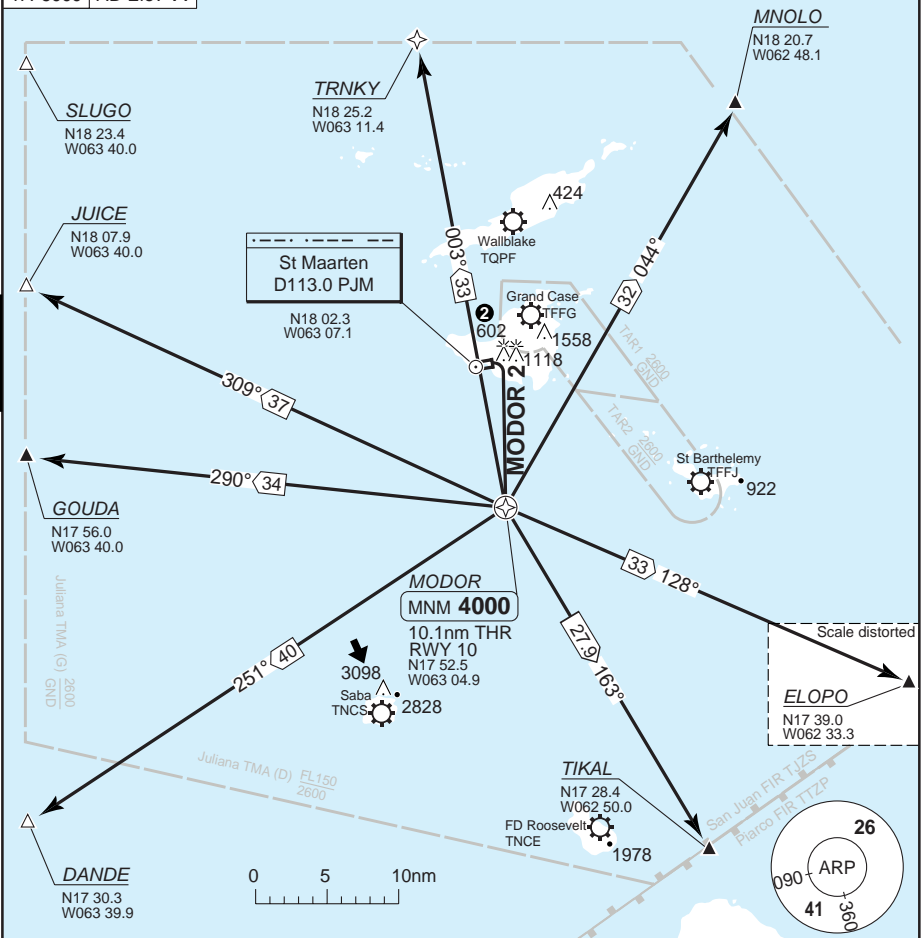
30 - 1

SID RWY 10 **RNAV** GNSS MODOR 2 **1** ST. MAARTEN/PHILIPSBURG

Juliana TWR 118.7	APP 128.95 118.7
TA 5000	AD Elev 14

1 Princess Juliana INTL

May be superseded by radar vectors



NOTE: MNM 1200 ceiling and VIS 2.8nm required to see and avoid the mountain 2.8nm east DER.

2 602ft hazard beacon, 6227ft from DER, 2044ft right of RCL. 1118ft hazard beacon, 9224ft from DER, 2044ft right of RCL.

MNM CLIMB GRADIENT: Determined by the visual track flown, operators will manoeuvre visually over lower terrain to minimise the necessary climb gradient.

SID	Routing	Altitudes
MODOR 2	After TKOF turn right to MODOR - 251° - DANDE.	MODOR MNM 4000 (If unable advise ATC)
	After TKOF turn right to MODOR - 128° - ELOPO.	
	After TKOF turn right to MODOR - 290° - GOUDA.	
	After TKOF turn right to MODOR - 309° - JUICE.	
	After TKOF turn right to MODOR - 044° - MNOLO.	
	After TKOF turn right to MODOR - 163° - TIKAL.	
	After TKOF turn right to MODOR - 003° - TRNKY.	

30 - 2

© Navtech - tncm02daorg0

Change: New spec.

THIS CHART IS A PART OF NAVIGRAPH NDAC AND IS INTENDED FOR FLIGHT SIMULATION USE ONLY

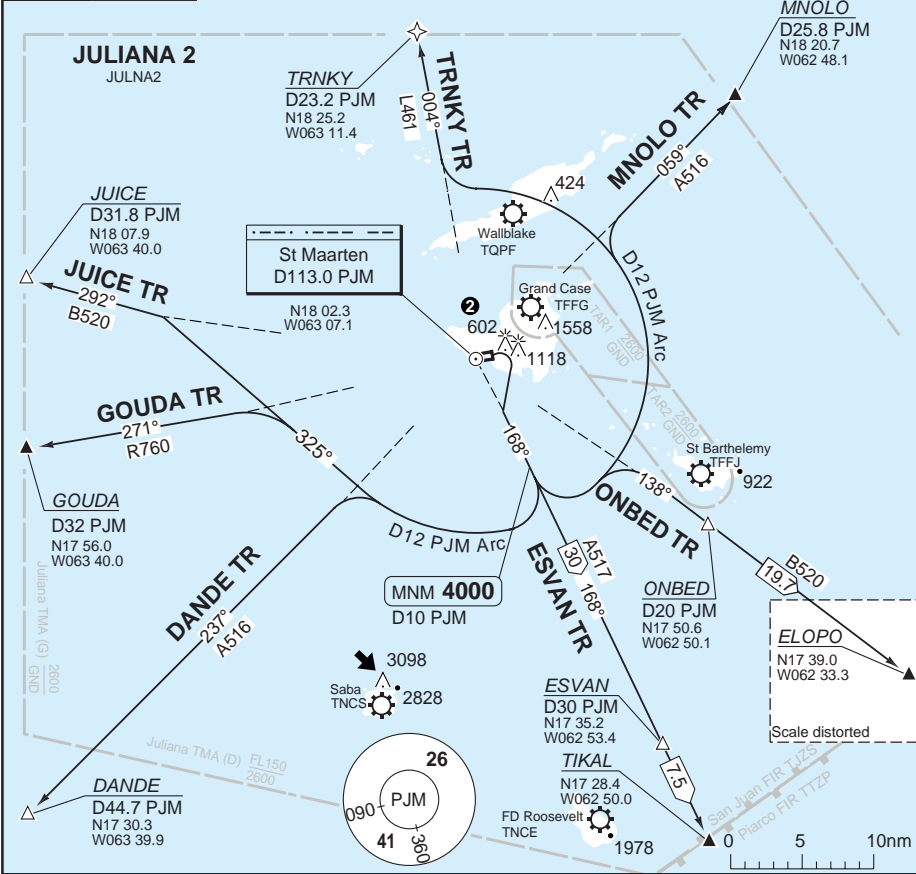
SID RWY 10 JULIANA 2

1 ST. MAARTEN/PHILIPSBURG

Juliana TWR	APP
118.7	128.95
	118.7
TA 5000	AD Elev 14

DME required

1 Princess Juliana INTL



30 - 3

NOTE: MNM 1200 ceiling and VIS 2.8nm required to see and avoid the mountain 2.8nm east DER.
 2 602ft hazard beacon, 6227ft from DER, 2044ft right of RCL. 1118ft hazard beacon, 9224ft from DER, 2044ft right of RCL.

MNM CLIMB GRADIENT: Determined by the visual track flown, operators will manoeuvre visually over lower terrain to minimise the necessary climb gradient.

Transition	Routing	Altitudes
(INITIAL CLIMB)	After TKOF turn right - intcp R168 PJM - follow transition.	D10 PJM MNM 4000 (If unable advise ATC)
DANDE	Turn right - D12 PJM Arc - turn left - R237 PJM - DANDE.	
ESVAN	ESVAN.	
GOUDA	Turn right - D12 PJM Arc - crossing R237 PJM - 325° - turn left - R271 PJM - GOUDA.	
JUICE	Turn right - D12 PJM Arc - crossing R237 PJM - 325° - turn left - R292 PJM - JUICE.	
MNOLO	Turn left - D12 PJM Arc - turn right - R059 PJM - MNOLO.	
ONBED	Turn left - D12 PJM Arc - turn right - R138 PJM - ONBED.	
TRNKY	Turn left - D12 PJM Arc - turn right - R004 PJM - TRNKY.	

© Navtech - tnrcm03daorg0

Change: New spec.

THIS CHART IS A PART OF NAVIGRAPH NDAC AND IS INTENDED FOR FLIGHT SIMULATION USE ONLY

SID RWY 10 MULLET 2

1 ST. MAARTEN/PHILIPSBURG

Juliana TWR 118.7 APP 128.95 118.7

TA 5000 AD Elev 14

Princess Juliana INTL

May be superseded by radar vectors

RAD required

MULLET 2
MULLT2

JUICE
N18 07.9
W063 40.0

B520
292°
JUICE TR

GOUDA TR
271°
R760

GOUDA
N17 56.0
W063 40.0

DANDE TR
237°
A516

DANDE
N17 30.3
W063 39.9

St Maarten
D113.0 PJM
N18 02.3
W063 07.1

MNM 4000
D10 PJM

3098
2828
Saba
TNCS

424
Wallblake
TQPF

Grand Case
TFFG
1558
1118

St Barthelemy
TFFJ
922

ELOPO TR
115°
TIKAL TR
180°
A517

Scale distorted
138°
B520
ELOPO
N17 39.0
W062 33.3

FD Roosevelt
TNCE
1978

TIKAL
N17 28.4
W062 50.0

San Juan FIR T325
Piarco FIR TTZP
26
PJM
41
360

0 5 10nm

NOTE: MNM 1200 ceiling and VIS 2.8nm required to see and avoid the mountain 2.8nm east DER.

602ft hazard beacon, 6227ft from DER, 2044ft right of RCL. 1118ft hazard beacon, 9224ft from DER, 2044ft right of RCL.

MNM CLIMB GRADIENT: Determined by the visual track flow, operators will manoeuvre visually over lower terrain to minimise the necessary climb gradient.

Transition	Routing	Altitudes
(INITIAL CLIMB)	After TKOF turn right - 230° - D10 PJM - follow transition.	D10 PJM MNM 4000 (If unable advise ATC)
DANDE	Turn right - 250° - intcp R237 PJM - DANDE.	
ELOPO	Turn left - 115° - intcp R138 PJM - ELOPO.	
GOUDA	Turn right - 315° - intcp R270 PJM - GOUDA.	
JUICE	Turn right - 315° - intcp R292 PJM - JUICE.	
TIKAL	Turn left - 115° - intcp R166 PJM - TIKAL.	

Change: New spec.

THIS CHART IS A PART OF NAVIGRAPH NDAC AND IS INTENDED FOR FLIGHT SIMULATION USE ONLY

30 - 4

© Navtech - tncm04daorg0

SID RWY 10 PELICAN 2

① ST. MAARTEN/PHILIPSBURG

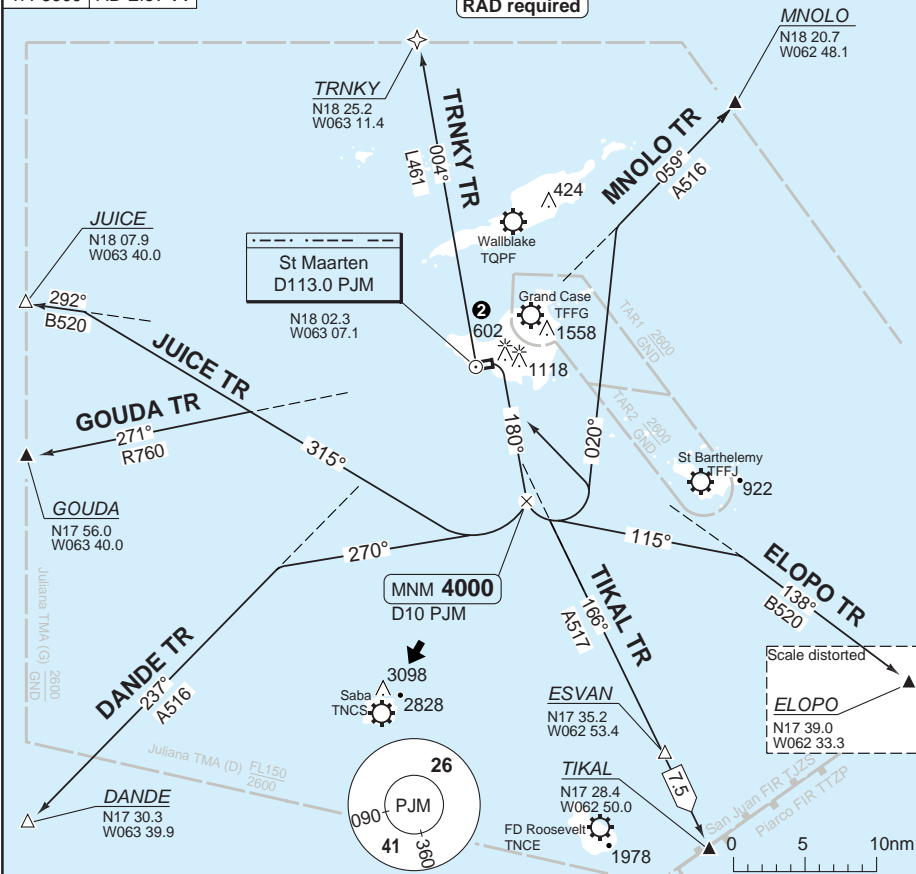
Juliana TWR
118.7
APP
128.95
118.7
TA 5000 AD Elev 14

PELICAN 2
PELCN2

① Princess Juliana INTL

May be superseded by radar vectors

RAD required



30 - 5

NOTE: MNM 1200 ceiling and VIS 2.8nm required to see and avoid the mountain 2.8nm east DER.
 ② 602ft hazard beacon, 6227ft from DER, 2044ft right of RCL. 1118ft hazard beacon, 9224ft from DER, 2044ft right of RCL.

MNM CLIMB GRADIENT: Determined by the visual track flown, operators will manoeuvre visually over lower terrain to minimise the necessary climb gradient.

Transitions	Routing	Altitudes
(INITIAL CLIMB)	After TKOF turn right - 180° - D10 PJM - follow transition.	D10 PJM MNM 4000 (If unable advise ATC)
DANDE	Turn right - 270° - intcp R237 PJM - DANDE.	
ELOPO	Turn left - 115° - intcp R138 PJM - ELOPO.	
GOUDA	Turn right - 315° - intcp R271 PJM - GOUDA.	
JUICE	Turn right - 315° - intcp R292 PJM - JUICE.	
MNOLO	Turn left - 020° - intcp R059 PJM - MNOLO.	
TIKAL	Turn left - intcp R166 PJM - TIKAL.	
TRNKY	Turn left - PJM - R004 PJM - TRNKY.	

© Navtech - tncm05daorg0

Change: New spec.

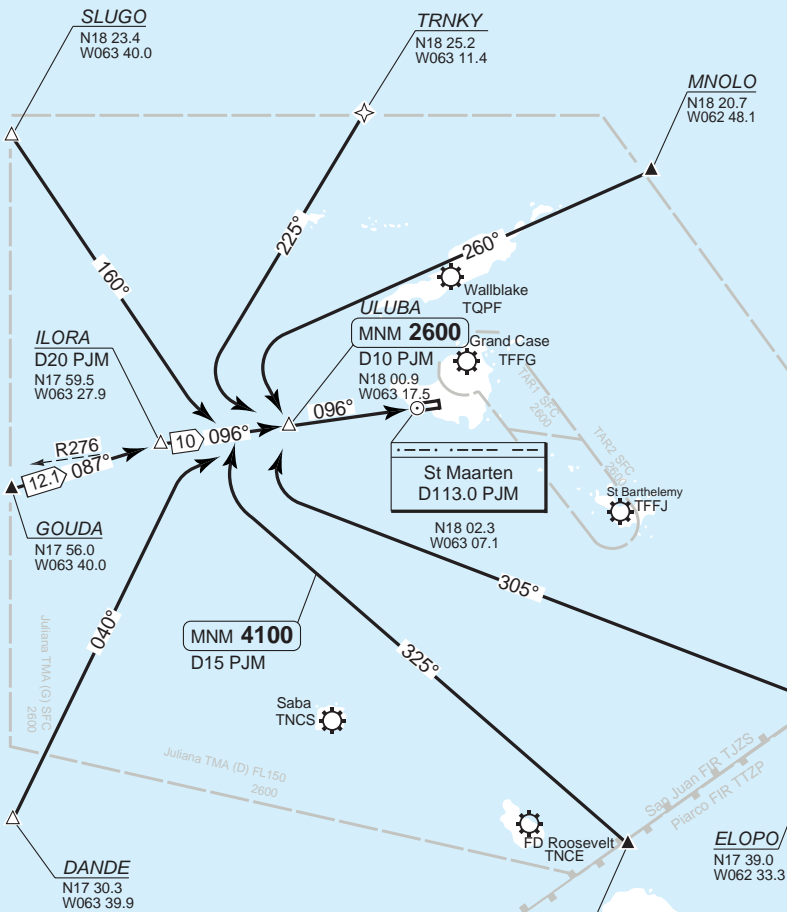
THIS CHART IS A PART OF NAVIGRAPH NDAC AND IS INTENDED FOR FLIGHT SIMULATION USE ONLY

STAR ULUBA 1 Princess Juliana INTL ST. MAARTEN/PHILIPSBURG

Juliana APP	TWR
128.95	118.7
118.7	
TL 65	AD Elev 14

Expect vectors to execute the VOR Z RWY 10 APCH straight-in.

RAD required



DCT DIST from ULUBA to:
 DANDE 37.3nm
 ELOPO 47.5nm
 GOUDA 22.0nm
 MNOLO 34.2nm
 SLUGO 31.0nm
 TIKAL 41.7nm
 TRNKY 24.9nm



© Navtech - tncm01aaorg0

40 - 1

Reverse side blank

Change: New spec.

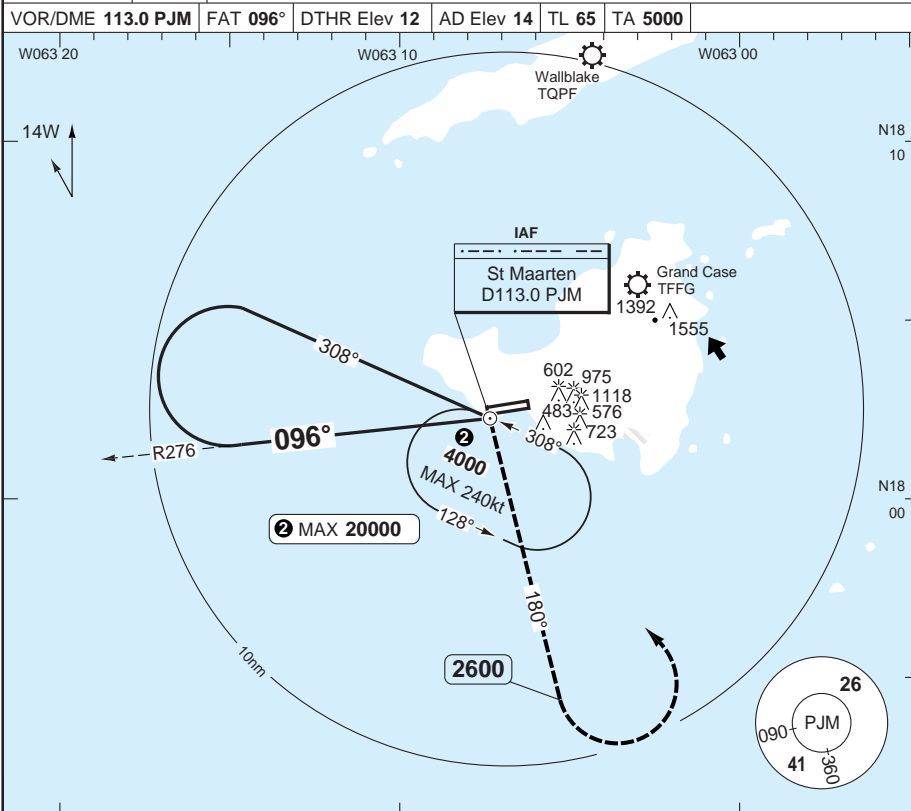
THIS CHART IS A PART OF NAVIGRAPH NDAC AND IS INTENDED FOR FLIGHT SIMULATION USE ONLY

VOR X RWY 10 CAT C/D

1 ST. MAARTEN/PHILIPSBURG

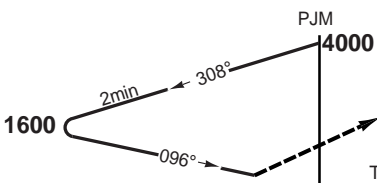
1 Princess Juliana INTL

Juliana APP 128.95 118.7	TWR 118.7					
VOR/DME 113.0 PJM	FAT 096°	DTHR Elev 12	AD Elev 14	TL 65	TA 5000	



PANS OPS

50 - 1



Turn right on 180° to 2600, then turn left to [PJM] climbing to 4000 and hold.

Timing NA for defining MAPt

nm 12 11 10 9 8 7 6 5 4 3 2 1 0

ACFT	VOR	VOR a
C	1040 (1026) 4900m	1040 (1026) 5000m
D		

a Non CDFA.
Note: Circling NA

LDA 2270x45
7447x148ft
P 3° L/R (56)

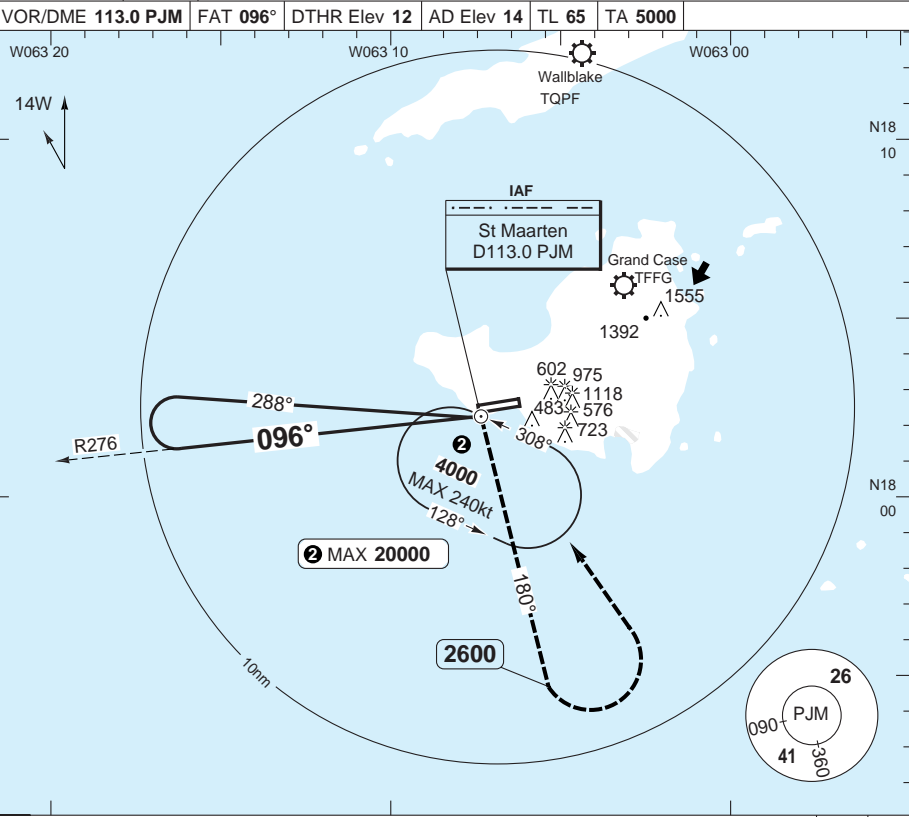


MALS

VOR Y RWY 10 CAT A/B

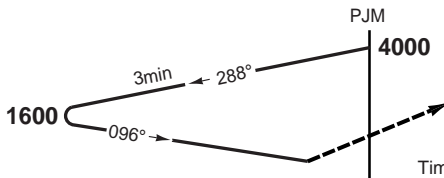
1 ST. MAARTEN/PHILIPSBURG

Juliana APP 128.95 118.7	TWR 118.7	1 Princess Juliana INTL			
VOR/DME 113.0 PJM	FAT 096°	DTHR Elev 12	AD Elev 14	TL 65	TA 5000



PANS OPS

50 - 2



Turn right on 180° to 2600, then turn left to [PJM] climbing to 4000 and hold.

nm	12	11	10	9	8	7	6	5	4	3	2	1	0
ACFT	VOR		VOR ^a		a Non CDFA. Note: Circling NA								
A	990 (986) 4500m		990 (986) 4700m										
B													

LDA 2270x45
7447x148ft
P 3° L/R (56)



MALS

© Navtech - tnrcm02lap00

Change: New spec.

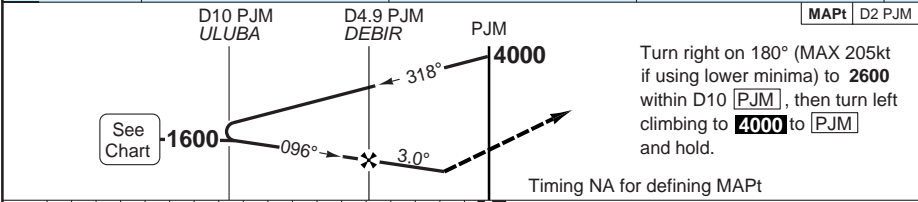
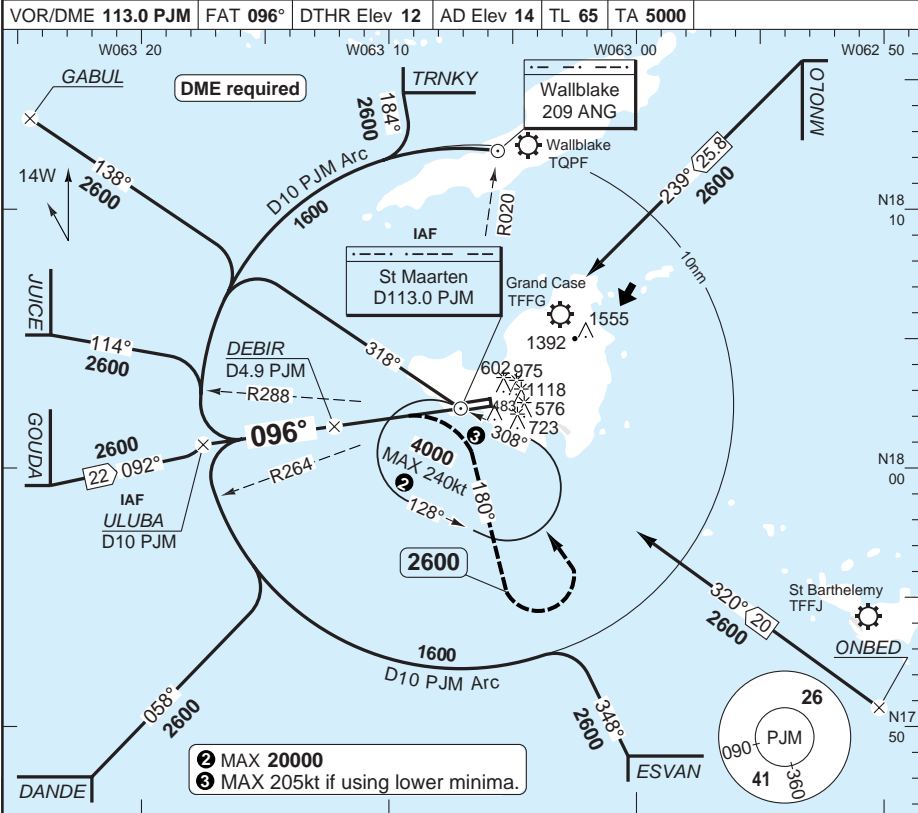
THIS CHART IS A PART OF NAVIGRAPH NDAC AND IS INTENDED FOR FLIGHT SIMULATION USE ONLY

VOR Z RWY 10

1 ST. MAARTEN/PHILIPSBURG

1 Princess Juliana INTL

Juliana APP 128.95 118.7	TWR 118.7				
VOR/DME 113.0 PJM		FAT 096°	DTHR Elev 12	AD Elev 14	TL 65 TA 5000



nm	18	17	16	15	14	13	12	11	10	9	8	7	6	5	4	3	2	1	0
ACFT	VOR+DME ①		VOR+DME ②		③ MISAP restricted to MAX 205 KIAS until tracking 180°. Note: Circling NA														
A																			
B	500 (486)		770 (756)																
C	2300m		3500m																
D																			
GS	80	100	120	140	160														
ROD 3.0°	420	530	630	740	840														
DME PJM	3.0° ALT	LDA 2270x45 7447x148ft P 3° L/R (56)																	
4.9	1600																		
4	1320																		
3	1010																		
2.3	770																		
MAPt	700																		
1.4	500																		

© Navtech - tnrcm03iap00

50 - 3

NALS

Change: New spec.

THIS CHART IS A PART OF NAVIGRAPH NDAC AND IS INTENDED FOR FLIGHT SIMULATION USE ONLY

NDB RWY 10

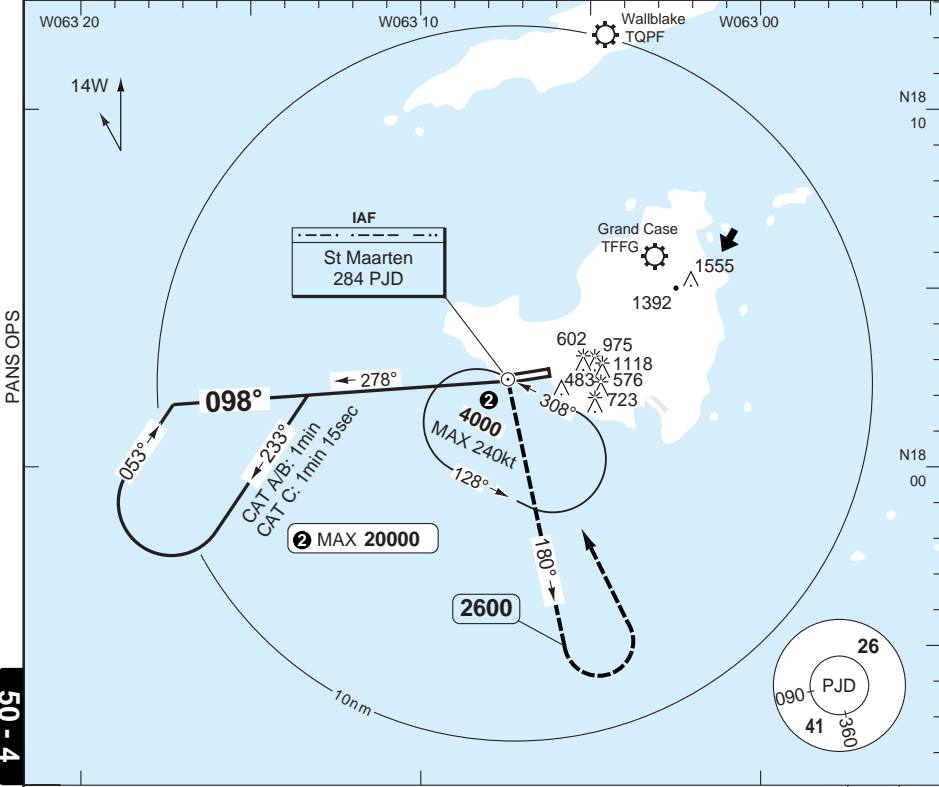
1 ST. MAARTEN/PHILIPSBURG

1 Princess Juliana INTL

Juliana APP
128.95
118.7

TWR
118.7

NDB 284 PJD | FAT 098° | DTHR Elev 12 | AD Elev 14 | TL 65 | TA 5000



PANS OPS

50 - 4

MAPt PJD



Turn right on 180° to 2600, then turn left to PJD climbing to 4000 and hold.

Timing NA for defining MAPt

nm 12 11 10 9 8 7 6 5 4 3 2 1 0

ACFT	NDB	NDB ^a
A	1000 (986) 4500m	1000 (986) 4700m
B		
C	1040 (1026) 4900m	1040 (1026) 5000m
D		

^a Non CDFA.
Note: Circling NA

LDA 2270x45
7447x148ft
P 3° L/R (56)



NALS

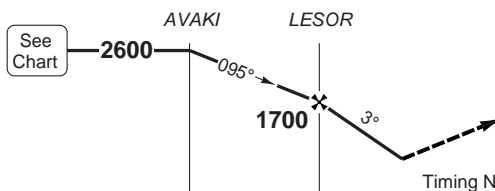
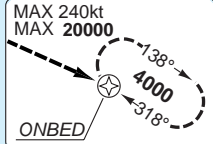
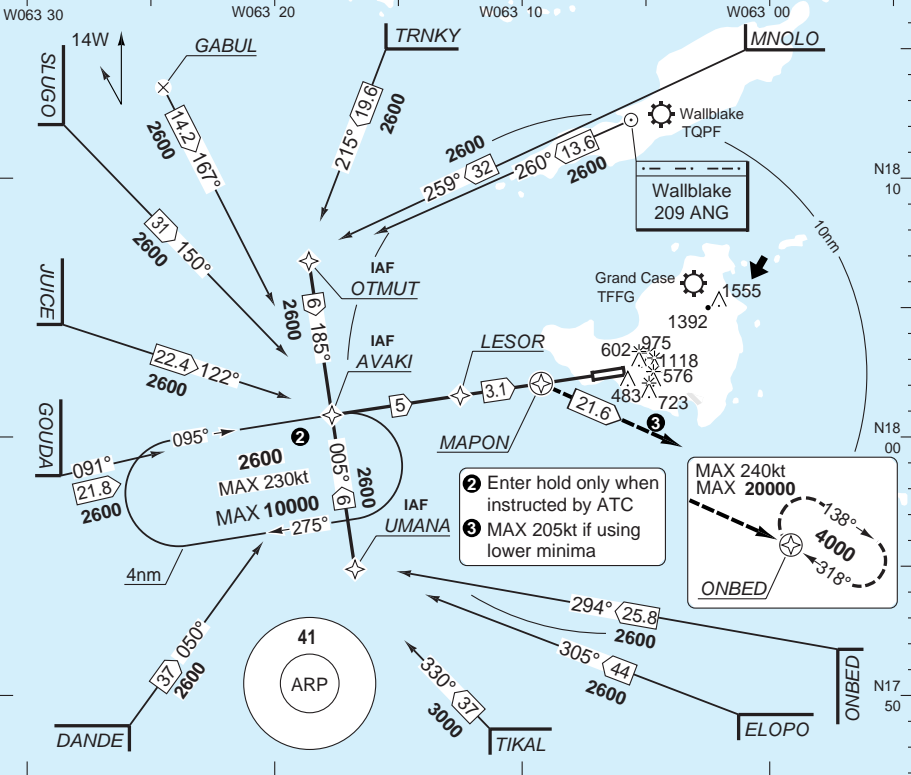
RNAV (GNSS) RWY 10

1 ST. MAARTEN/PHILIPSBURG

1 Princess Juliana INTL

Juliana APP	TWR
128.95	118.7
118.7	

RNAV	FAT 095°	DTHR Elev 12	AD Elev 14	TL 65	TA 5000
------	----------	--------------	------------	-------	---------



Turn right climbing to **4000** to ONBED and hold. (MAX 205kt till ONBED if using lower minima)

nm 20 19 18 17 16 15 14 13 12 11 10 9 8 7 6 5 4 3 2 1 0	TCH 50
---	--------

ACFT	LNAV a	LNAV
A	700 (686) 1500m	770 (756) 1500m
B		
C	700 (686) 2400m	770 (756) 2400m
D		

a MISAP restricted to MAX 205 KIAS until established direct ONBED.
 Note: Circling NA

THR	3.0° ALT	LDA 2270x45 7447x148ft P 3° L/R (56)
10	2600	
7.9	2320	
7	1990	
6	1670	
5	1350	
4	1030	
3	770	
2.2	700	
2.0		

GS	80	100	120	140	160
ROD 3.0°	430	540	650	760	860

Change: New spec.

THIS CHART IS A PART OF NAVIGRAPH NDAC AND IS INTENDED FOR FLIGHT SIMULATION USE ONLY

© Navtech - tnrcm05iap00

50 - 5

NALS
 Reverse side blank